

JULIE ANN'S FLOOR PLAN

Dubai, UAE

interiorIT
online



GENERAL NOTES:

1. MEASUREMENTS ARE NOMINAL AND MAY VARY WITH THE APPROVAL OF Interior It Online

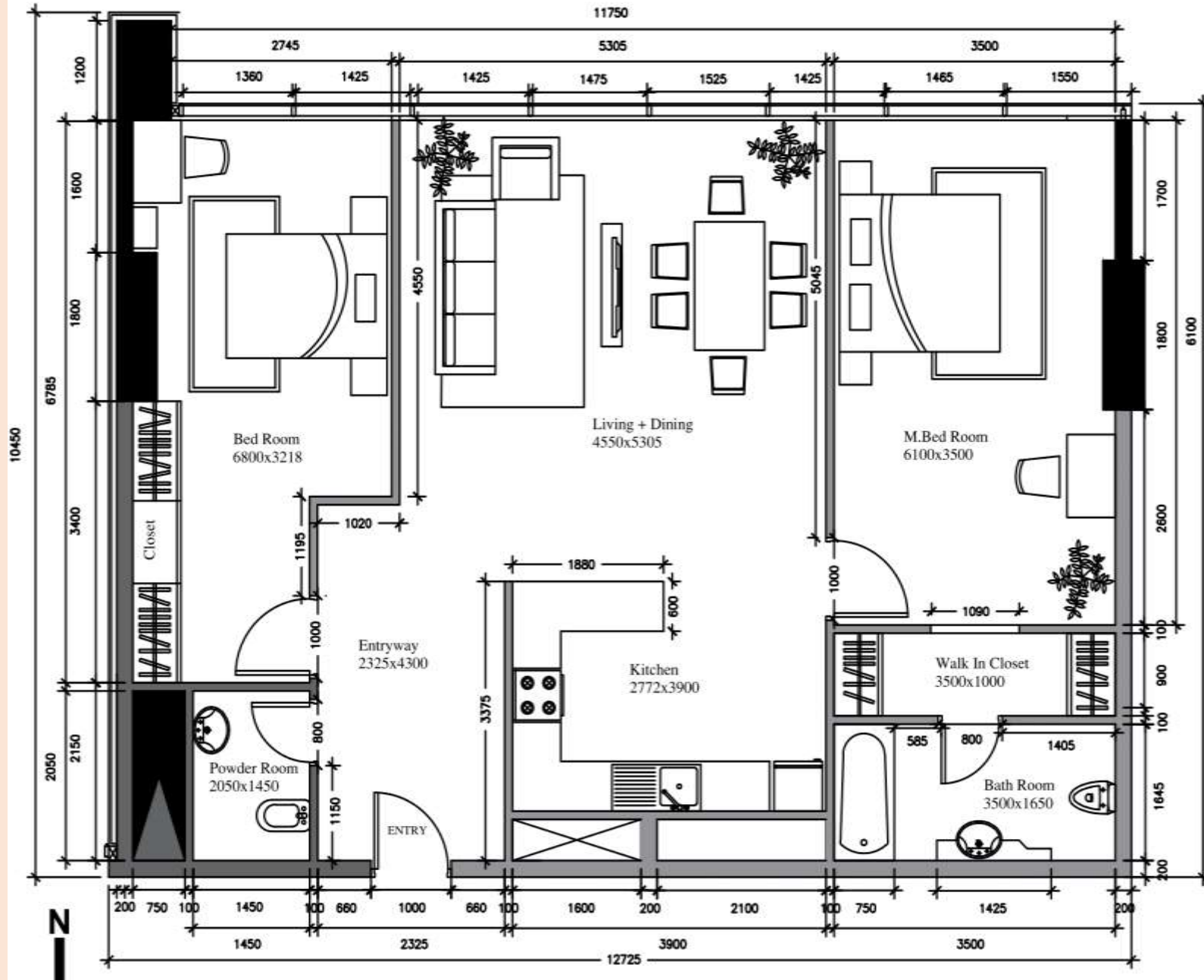
2. ALL MEASUREMENTS ARE IN MILLIMETERS UNLESS OTHERWISE SPECIFIED.

3. DRAWING ISSUED ARE TO BE VERIFIED BY THE CONTRACTOR.

4. THE CONTRACTOR SHALL BE RESPONSIBLE FOR THE TRUE SETTING OUT AND SHALL OBTAIN THE APPROVAL OF Interior It Online

5. CONTRACTOR'S RESPONSIBILITY TO CHECK DRAWING AND ANY DESIGN DETAIL FOR THE INDENTED RESULTS.

6. CONTRACTOR'S RESPONSIBILITY TO SUBMIT SAMPLES OF MATERIALS AND FINISHES PRIOR TO FINAL APPLICATION.



DESIGNED BY

interiorIT
online

Website:

www.interioritonline.com

Email:

info@interioritonline.com

CLIENT'S DETAILS

Name: Julie Ann

Email: *****

Country: Dubai

PROJECT DETAILS

Project type: Apartment

Approx. area: 1280 Sq.Ft.

Floor: 15th Floor

Room dimensions:

1. Entryway (2325X4300)MM
2. Living + Dining (4550X5305)MM
3. Kitchen (2772X3900)MM
4. M. Bed room (6100X3500)MM
5. Bedroom (6800X3218)MM
6. Bathroom (3500X1650)MM
7. Powder room (2050X1450)MM
8. Walk in closet (3500X1000)MM

Designer: Puja Mukherjee

Project No: J101

Date: **/**/****

Illustration for identification purposes only not to scale.

WE'RE READY TO CONNECT WITH YOU !!



[@interioritonline](#)



[interior it online](#)

[@interior_it_on](#)



[Interior It Online](#)

[interioritonline](#)



FOR MORE INFORMATION



Visit us

www.interioritonline.com



Email us

info@interioritonline.com